

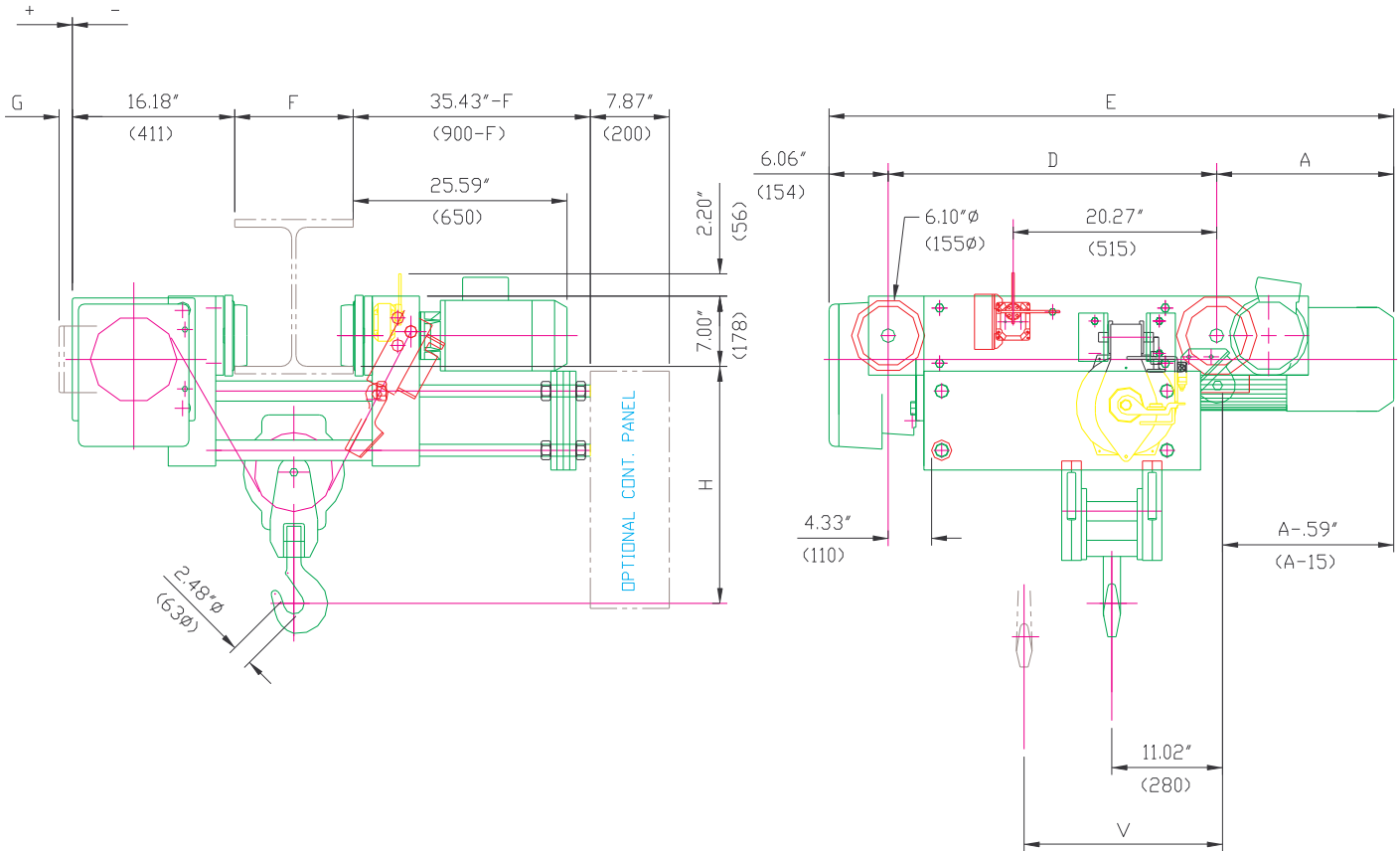
MUNCK

PRODUCT
INFORMATION

DWG. NO:

DATE: 15.04.98

REVISION: 0



MUNCK RESERVES THE RIGHT TO MAKE CHANGE WITHOUT NOTICE.

| | | | | | |
|----------------|---|----------------|---------------|----------------|---|
| CAPACITY: | 7 1/2 TONS (15000 LBS) | HOIST CLASS: | HMI H3 | HOIST MOTOR: | 9.3/2.8 HP, 1800/600 RPM, TEFC, S3 - 40%, CLASS "F" INSULATION |
| HOIST SPEED: | 16 / 4 F.P.M. (OPT. SPEEDS AVAILABLE) | TROLLEY CLASS: | CMAA C | TROLLEY MOTOR: | .9 / .22 HP, 3600/900 RPM, TEFC, S3 - 60%, CLASS "F" INSULATION |
| TROLLEY SPEED: | 80 / 20 F.P.M. (OPT. SPEEDS AVAILABLE) | POWER SUPPLY: | 460V-3PH-60HZ | | |

| HOIST TYPE | HEIGHT OF LIFT | | V INCHES (mm) | D INCHES (mm) | E INCHES (mm) | A INCHES (mm) | G INCHES (mm) | WEIGHT LBS (KG) | FLANGE WIDTH "F" | | HEADROOM "H" | |
|------------|----------------|--------|-----------------------|-----------------------|-----------------------|-----------------------|-----------------------|-------------------------|------------------|--------|--------------|--------|
| | METERS | FEET | | | | | | | mm | INCHES | mm | INCHES |
| 2822E-1423 | 6.1 | 20'-0" | 17.59 (447) | 32.71 (831) | 56.29 (1430) | 17.51 (445) | 1.33 (34) | 1117 (617) | ≤200 | ≤7.87 | 500 | 19.68 |
| 2822E-2423 | 8.1 | 26'-6" | 19.09 (485) | 38.62 (981) | 62.20 (1580) | 17.51 (445) | 1.33 (34) | 1338 (637) | ≤305 | ≤12.00 | 600 | 23.62 |
| 2822E-3423 | 11.2 | 36'-8" | 21.25 (540) | 47.28 (1201) | 70.86 (1800) | 17.51 (445) | 1.33 (34) | 1470 (697) | ≤406 | ≤15.98 | 700 | 27.55 |
| 2822E-4423 | 15.3 | 50'-2" | 24.21 (615) | 59.09 (1501) | 82.67 (2100) | 17.51 (445) | 1.33 (34) | 1636 (772) | ≤500 | ≤19.68 | 800 | 31.49 |