

MUNCK

PRODUCT
INFORMATION

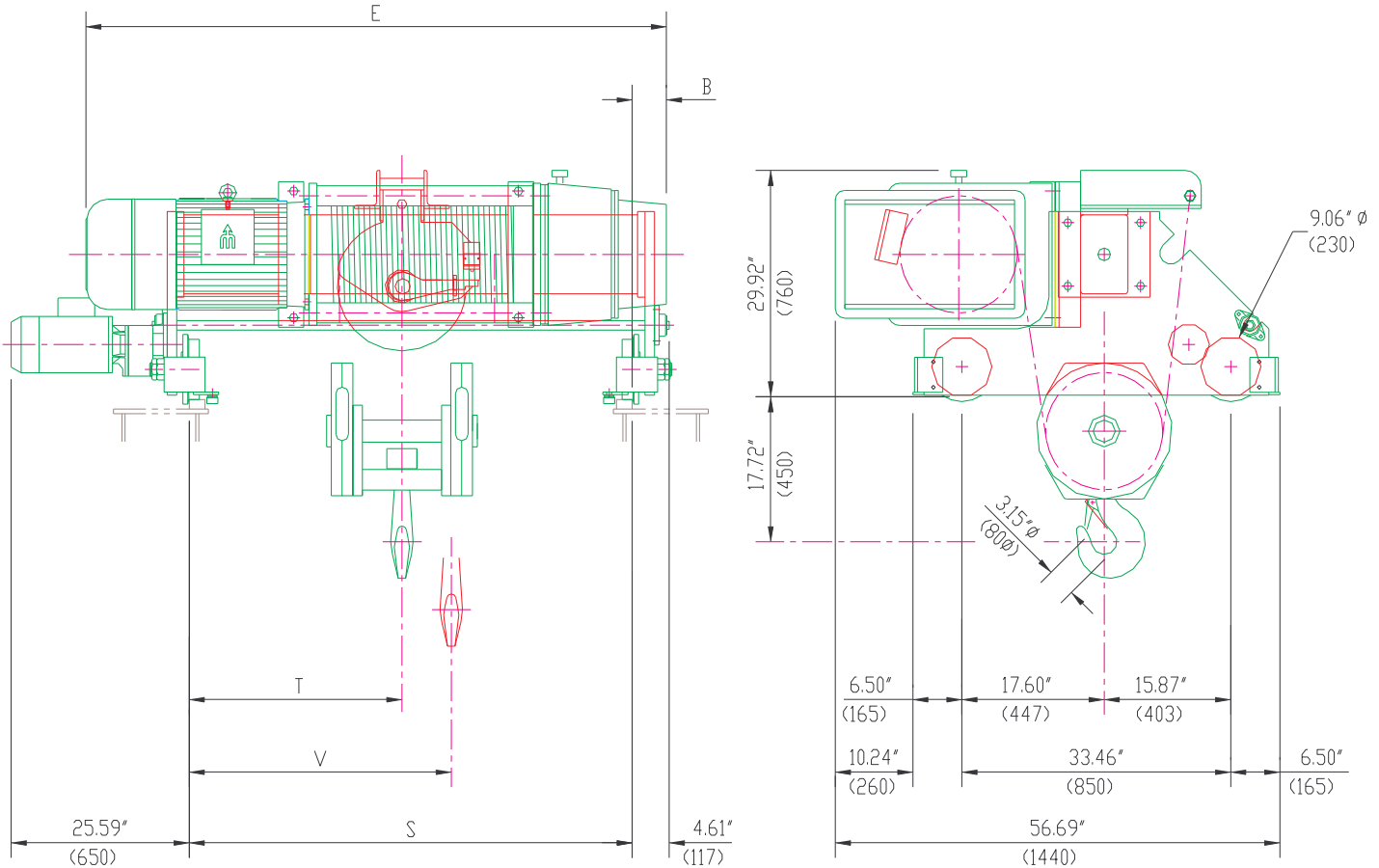
2841
TWO RAIL TROLLEY
15 TON CAPACITY

DWG. NO:

2841D1426

DATE: 04.07.99

REVISION: 1



MUNCK RESERVES THE RIGHT TO MAKE CHANGE WITHOUT NOTICE.

HOIST TECHNICAL DATA

CAPACITY:	15 TONS (30000 LBS)	HOIST CLASS:	HMI H4	HOIST MOTOR:	22.5/7.7 HP, 1800/600 RPM, TEFC, S3 - 40%, CLASS "F" INSULATION
HOIST SPEED:	16/5 F.P.M (OPT. SPEEDS AVAILABLE)	TROLLEY CLASS:	CMAA C		
TROLLEY SPEED:	80 / 20 F.P.M (OPT. SPEEDS AVAILABLE)	POWER SUPPLY:	460V-3PH-60HZ	TROLLEY MOTOR:	12/3 HP, 1800/600 RPM, TEFC, S3 - 60%, CLASS "F" INSULATION

DIMENSIONAL INFORMATION

HOIST TYPE	HEIGHT OF LIFT		S INCHES (mm)	T INCHES (mm)	V INCHES (mm)	B INCHES (mm)	E INCHES (mm)	WEIGHT LBS (KG)
	METERS	FEET						
2841D-1426	7.9	25'-11"	55.11 (1400)	25.39 (645)	29.72 (755)	2.36 (60)	72.24 (1835)	3119 (1415)
2841D-2426	12.0	39'-4"	55.11 (1400)	24.02 (610)	30.91 (785)	11.06 (281)	82.32 (2091)	3229 (1465)
2841D-3426	19.2	63'-0"	82.68 (2100)	35.43 (900)	46.85 (1190)	12.60 (320)	100.00 (2540)	3648 (1655)
2841D-5426	25.0	82'-0"	110.24 (2800)	47.48 (1206)	62.76 (1594)	11.30 (287)	114.17 (2900)	3792 (1720)