



PRODUCT
INFORMATION

LOW HEADROOM MONORAIL TROLLEY

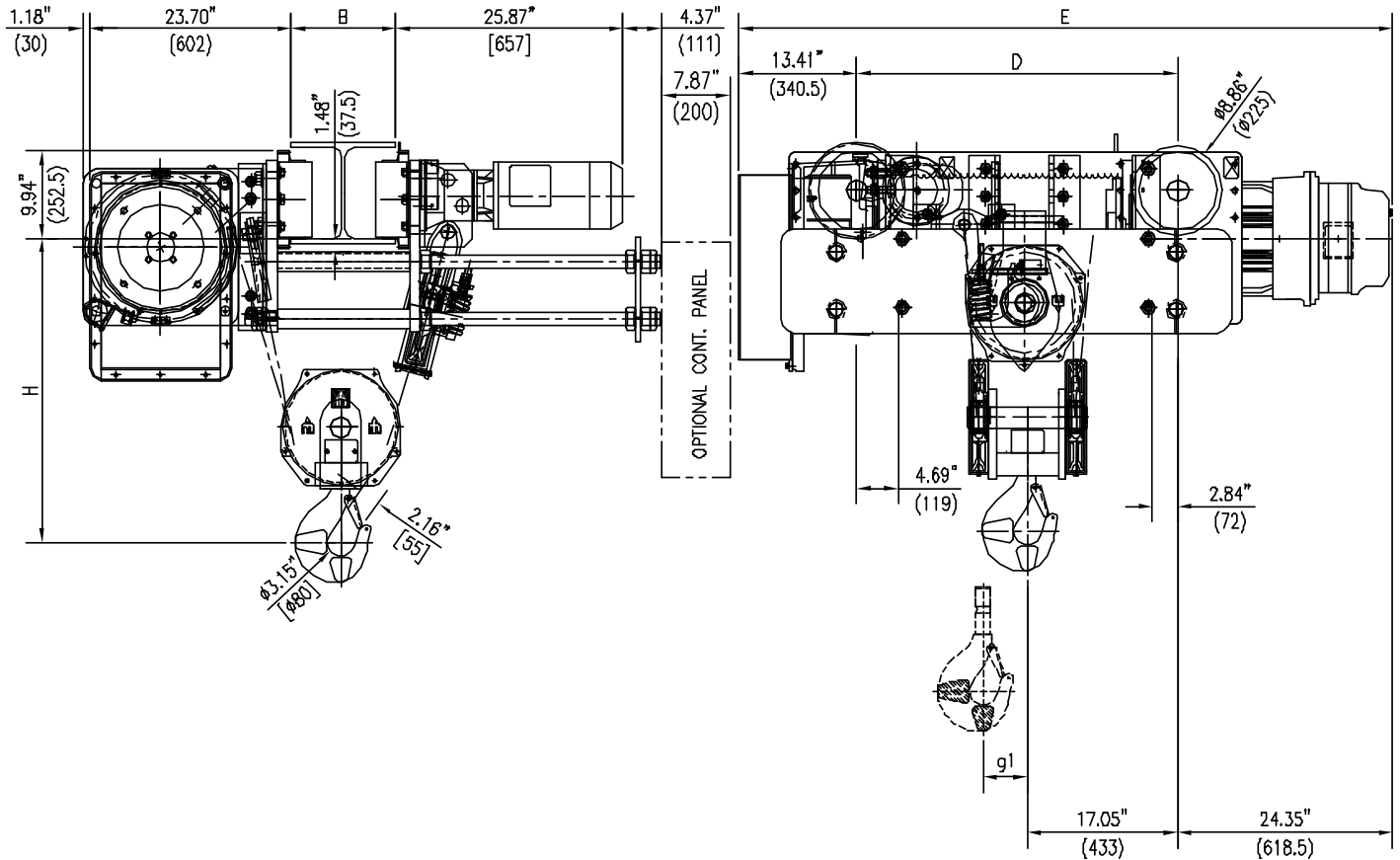
DWG. NO:

3141A-1423

20 TON CAPACITY

DATE: 01.11.00

REVISION: 0



MUNCK RESERVES THE RIGHT TO MAKE CHANGE WITHOUT NOTICE.

HOIST TECHNICAL DATA

CAPACITY:	20 TONS (40000 LBS)	HOIST CLASS:	HMI H4	HOIST MOTOR:	26.8/8.4 HP, 1800/600 RPM, TEFC, S3 - 30%, CLASS "F" INSULATION
HOIST SPEED:	17 / 6 F.P.M { OPT. SPEEDS AVAILABLE }	POWER SUPPLY:	460V-3PH-60HZ		
TROLLEY SPEED:	75 / 18 F.P.M. { OPT. SPEEDS AVAILABLE }	HOIST MOTOR:	6275-67	TROLLEY MOTOR:	2.4/.6 HP, 3600/900 RPM, TEFC, S3 - 60%, CLASS "F" INSULATION
		TROLLEY MOTOR:	9100-1575R08G		

DIMENSIONAL INFORMATION

HOIST TYPE	HEIGHT OF LIFT		g1 INCHES (mm)	D INCHES (mm)	E INCHES (mm)	WEIGHT LBS (KG)	FLANGE WIDTH "B"		HEADROOM "H"	
	METERS	FEET					mm	INCHES	mm	INCHES
3141A-1423	7.7	25'-3"	4.72 (120)	36.42 (925)	74.17 (1884)	3341 (1515)	≤ 200	≤ 7.87	950	37.40
3141A-2423	11.8	38'-9"	7.28 (185)	46.50 (1181)	84.25 (2140)	3771 (1710)	≤ 305	≤ 12.00	925	36.42
3141A-3423	19.2	63'-0"	11.65 (296)	64.17 (1630)	101.93 (2589)	4189 (1900)	≤ 406	≤ 15.98	880	34.64
3141A-4423	-	-	-	-	-	-	≤ 500	≤ 19.68	850	33.46
3141A-5423	25.0	82'-0"	15.28 (388)	78.35 (1990)	116.10 (2949)	4498 (2040)	≤ 800	≤ 23.62	950	37.40